

3 1/2 - TYPE 8A

SUPERFICIE PI. CA.
AREA SQ. FT.

567 pi²

APARTEMENTS / APARTMENTS

302, 402, 502, 602

1 - SALLE DE SÉJOUR / LIVING ROOM

11' - 10" x 9' - 11"

2 - SALLE À MANGER / DINING ROOM

9' - 8" x 8' - 4"

3 - CUISINE / KITCHEN

11' - 6" x 9' - 6"

4 - CHAMBRE / BEDROOM

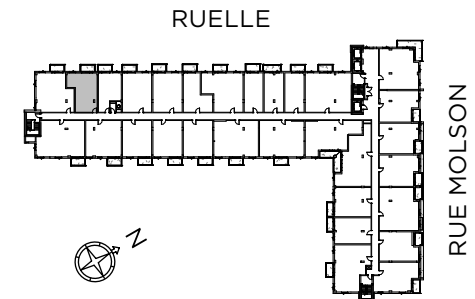
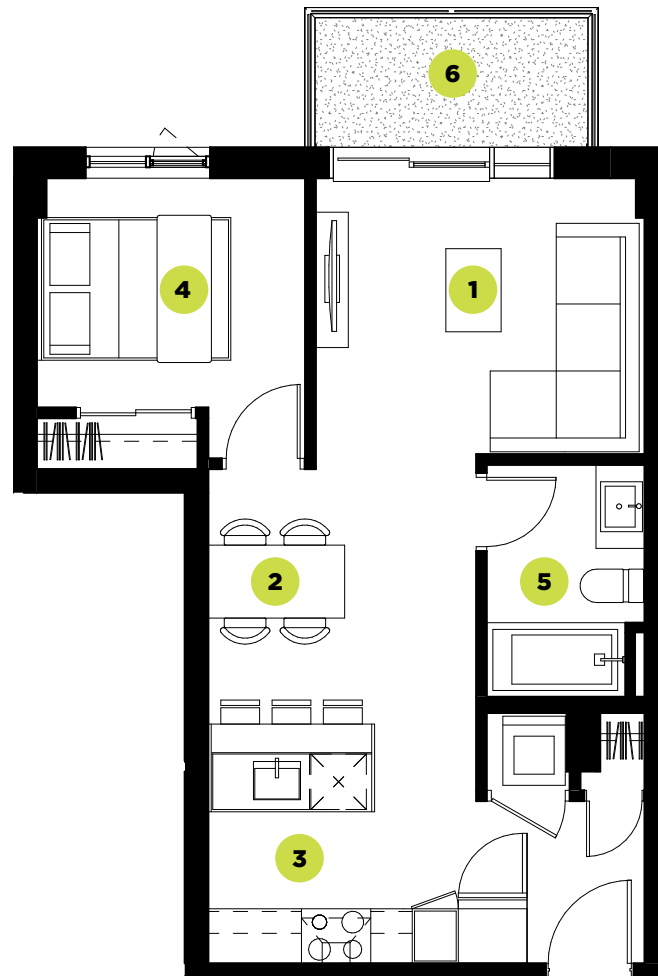
9' - 8" x 8' - 3"

5 - SALLE DE BAIN / BATHROOM

5' - 8" x 8' - 4"

6 - BALCON / BALCONY

9' - 10" x 4' - 8"



Plans préliminaires sujets à changements. La superficie brute des logements n'inclut pas celle des balcons et/ou terrasses. La superficie et la dimension des plans de vente sont approximatives et peuvent varier. Chaque appartement a une tête d'air climatisé et un condenseur sur le balcon. Le micro-onde (m-o) se trouve encastré dans le garde-manger. / Preliminary floor plans subject to change. The gross floor area of the units does not include the balconies and/or terraces. The area and dimensions of the sales plans are approximate and may vary. Each apartment has an air-conditioning unit as well as a condenser on the balcony. There is a built-in microwave in the pantry.

PRIX* :

SIGNATURE
LOCATAIRE :

SIGNATURE
AGENT LOCATION :

DATE :