

## 4 1/2 - TYPE 1

SUPERFICIE PI. CA.  
AREA SQ. FT.

911 pi<sup>2</sup>

APPARTEMENTS / APARTMENTS

324, 325, 423, 424, 524, 525,  
624, 625

### 1 - SALLE DE SÉJOUR / LIVING ROOM

12' - 0" x 9' - 11"

### 2 - SALLE À MANGER / DINING ROOM

10' - 11" x 10' - 5"

### 3 - CUISINE / KITCHEN

9' - 7" x 12' - 4"

### 4 - CHAMBRE 1 / BEDROOM 1

9' - 8" x 10' - 2"

### 5 - CHAMBRE 2 / BEDROOM 2

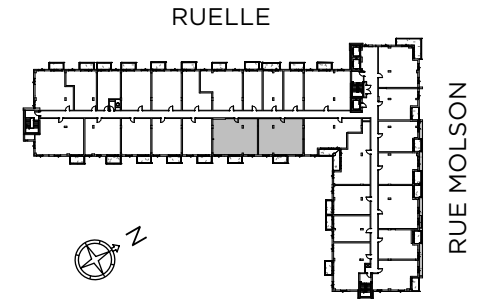
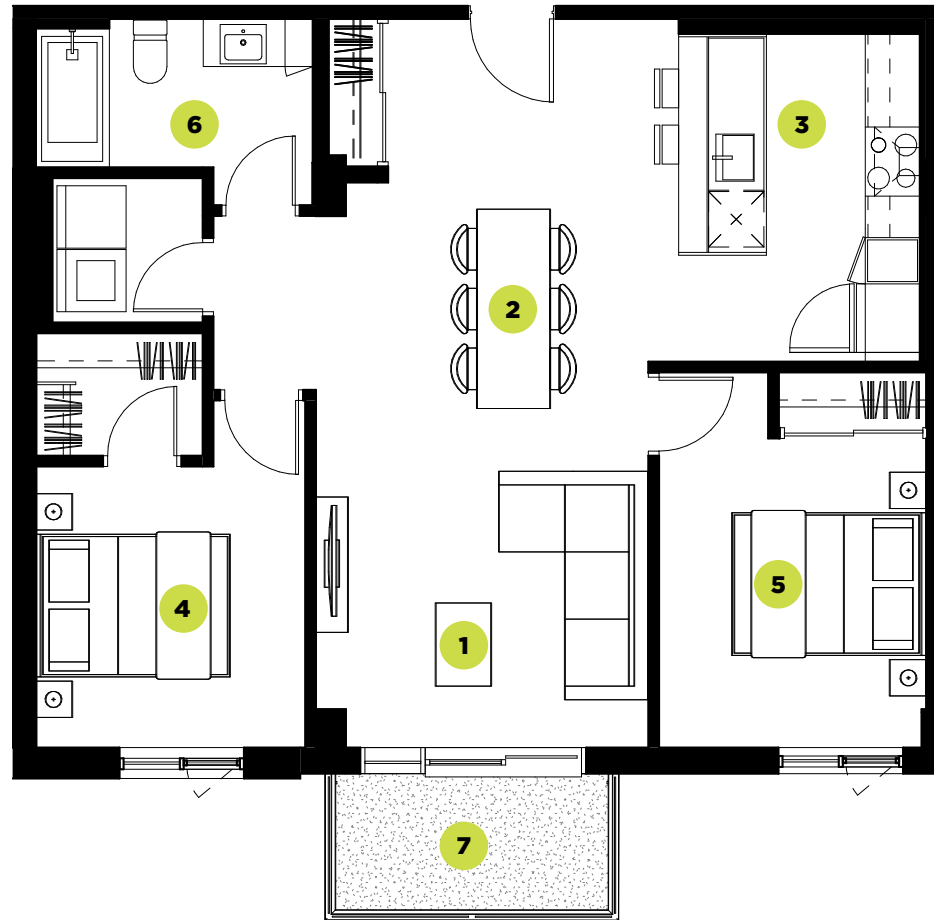
9' - 8" x 11' - 2"

### 6 - SALLE DE BAIN / BATHROOM

10' - 0" x 5' - 0"

### 7 - BALCON / BALCONY

9' - 10" x 4' - 11"



Plans préliminaires sujets à changements. La superficie brute des logements n'inclut pas celle des balcons et/ou terrasses. La superficie et la dimension des plans de vente sont approximatives et peuvent varier. Chaque appartement a une tête d'air climatisé et un condenseur sur le balcon. Le micro-onde (m-o) se trouve encastré dans le garde-manger. / Preliminary floor plans subject to change. The gross floor area of the units does not include the balconies and/or terraces. The area and dimensions of the sales plans are approximate and may vary. Each apartment has an air-conditioning unit as well as a condenser on the balcony. There is a built-in microwave in the pantry.

PRIX\* :

SIGNATURE  
LOCATAIRE :

SIGNATURE  
AGENT LOCATION :

DATE :